



# SAFAA

DESIGN. BUILD. INSPIRE.

# PROFILE

**SAFAA Constructions and Interiors (P) Ltd.,**

[www.safaaconstructions.com](http://www.safaaconstructions.com)

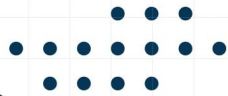
Constructions | Interiors | MEP | Turnkey Solutions | Homes



Contact Us: 044 - 4767 3917

DESIGN. BUILD. INSPIRE.

## Who we are



### SAFAA Constructions and Interiors Pvt. Ltd.,

A growing construction company committed in delivering high quality, innovative and complete turn-key solutions since 2017.

**SAFAA Constructions and Interiors**, located in Chennai, is a dynamic firm dedicated to excellence in **Constructions, Interiors, MEP, Turnkey Solutions and Homes**. Our experienced professionals are driven by a passion for craftsmanship and superior project management, aiming to exceed client expectations. We aspire to create timeless, functional spaces that meet the highest industry standards and contribute to the well-being and success of individuals and communities.



## Mission

Our aim is to contribute to the growth and development of the communities we serve while maintaining the highest standards of integrity, professionalism, and sustainability



## Vision

Our vision is to be a leading construction and interiors company in South India, known for our unwavering commitment to quality, innovation, and client satisfaction



## Integrity

We conduct our business with honesty, transparency and ethical practices, fostering trust and respect with our clients, partners, and employees.



## Excellence

We are dedicated to delivering exceptional quality in every project employing best practices and continually seeking opportunities for improvement.



## Client-Centric

We listen, understand and tailor our solutions to meet the unique requirements of the client, ensuring utmost customer satisfaction and success.



## Teamwork

We embrace innovation and technology at our best. We ensure a collaborative and inclusive work environment, where every individual's contribution is valued

# Team

A well-integrated group of professionals, each bringing a diverse set of expertise and complementary skills to the table, forming a cohesive team with strong core competencies.



## S. Ansar Mohideen

**Managing Director**

He has demonstrated proficiency in diverse projects, including High Rise, Residential, Commercial, Industrial, Health care, and Hospitality. Notably, he has amassed 16 years of international experience in the Middle East (K.S.A., U.A.E, Qatar) and 1 year in Seychelles.

**29 years  
of Expertise**

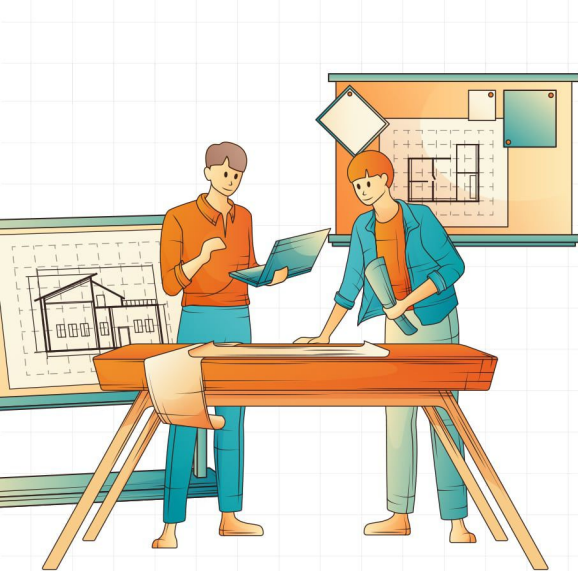


## S. Syed Mohamed Anwar

**Operations Director**

He has played a pivotal role in establishing the company's operations for both construction and interiors, ensuring compliance with industry laws. His strategic leadership in Finance, HR, Admin, and Logistics contributes significantly to achieving financial and organizational goals.

**33years  
of Expertise**



Our dynamic team, comprised of highly skilled **Engineers, Architects, and Consultants**, working collaboratively to achieve outstanding results.

## CORE COMPETENCIES



**Innovative Design Solutions**



**Project Management Excellence**



**Diverse Construction Expertise**



**Diverse Homes Expertise**



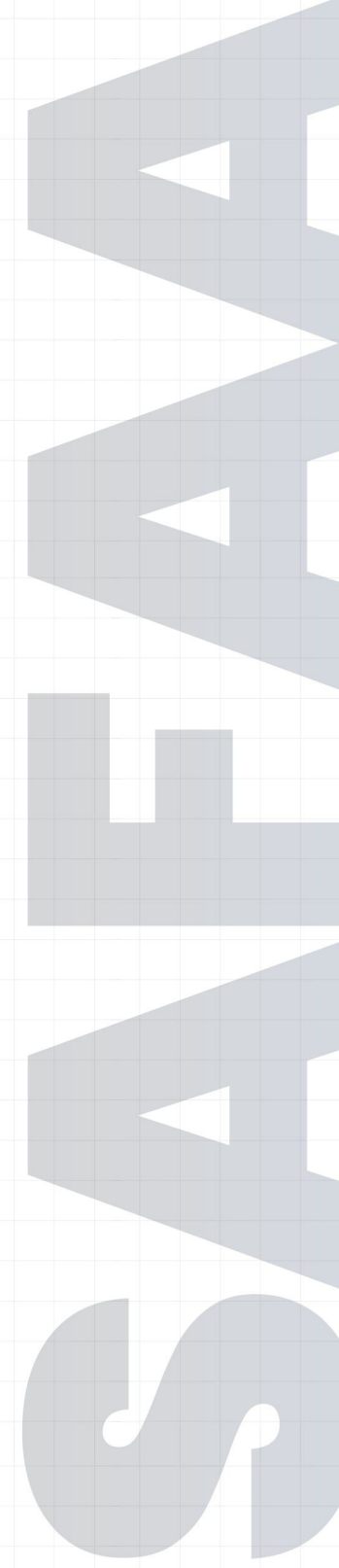
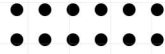
**Compliance and Regulatory Knowledge**



**International Experience**



# Our Services



## Constructions

Ensuring the successful realization of buildings, infrastructure, or facilities. From concept to completion, we play a pivotal role in delivering projects on time, within budget, and meeting the desired quality standards.



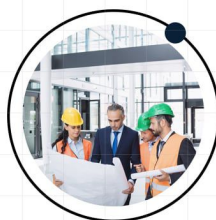
## Interiors

Whether for residential, commercial, or hospitality spaces, our interior services aim to optimize the use of space. The goal is to transform interiors into inviting, harmonious, and visually appealing that align with the client's vision.



## MEP

Our services for MEP (Mechanical, Electrical, and Plumbing) engineering design offer sustainable solutions for a variety of projects spanning across industries, including hospitals, commercial buildings, industrial facilities, and more.



## Turnkey Solutions

Revolutionizing the real estate development sector, we provide clients with comprehensive services from project inception to completion. This approach streamlines the construction process, ensuring a hassle-free and seamless experience for clients.



## Homes

We proudly construct homes with skilled expertise, sensitivity, and thorough foresight.



## Recent from Gallery

*We aspire to create timeless, functional spaces that meet the highest industry standards and contribute to the well-being and success of individuals and communities.*



# Construction


## Completed Projects

| Description  | Location                          | Buildup Area |
|--|-----------------------------------|--------------|
|  Design and Turnkey Construction of Stilt +2 Floors, 5 Nos of 3 BHK residential apartments at Sait Colony  | Egmore, Chennai                   | 7200 Sq. Ft. |
|  Turnkey Construction of Stilt + 2 Floors, commercial building at Valluvar Salai   | Ramavaram, Chennai                | 9000 Sq. Ft. |
|  Design and remodelling of a bungalow including strengthening, reconstructing, interiors including loose furniture and into Nourishment Centre             | Harrington Road, Chetpet, Chennai | 6000 Sq. Ft. |
|  Construction of Stilt + 3 Floors, 6 Nos of 2 BHK and 1 No of Duplex residential apartment at Sundaram Colony  | Tambaram, Chennai                 | 9000 Sq. Ft. |
|  Design, renovation, refurbishment including chip chop breaking, reconstructing in a ground floor restaurant in an ancient building                        | Periamet, Chennai                 | 3500 Sq. Ft. |
|  Turnkey Construction of Stilt + 3 Floors, 5 Nos, of 2 BHK, 2 Nos of 1 BHK and 1 No. of 3 BHK residential apartment                                      | Perumbakkam, Chennai              | 9500 Sq. Ft. |
|  Design, renovation, refurbishment including chip chop breaking, reconstructing and complete interiors in a Ground plus First Floor Residential Bungalow | Hanifa Nagar, Nagercoil           | 4000 Sq. Ft. |

## Ongoing Projects

|  |                            |                |
|--|----------------------------|----------------|
|  Construction of 7th floor, renovation, refurbishment of various works in Hotel Ambassador Pallava                     | Egmore, Chennai            |                |
|  Construction of Ground and First Floor Bungalow   | Rahmath Nagar, Tirunelveli | 5500 Sq. Ft.   |
|  Construction of Stilt plus 5 Floors, 5 Nos of 2 BHK and 5 Nos of 3 BHK residential apartments at Kaveri Nagar         | Saidapet, Chennai          | 12,000 Sq. Ft. |
|  Design and Construction of Stilt plus 5 Floors, 2 Nos of 3 BHK, 2 Nos of Duplex Residential Apartment at Seetha Nagar | Nungambakkam, Chennai      | 16,000 Sq. Ft. |
|  Design and Construction of Stilt plus 4 Floors, 4 Nos of 3 BHK, 1 Nos of Duplex Residential Apartment at Seetha Nagar | Anna Nagar, Chennai        | 14,500 Sq. Ft. |

## Completed Projects

| Description   | Location                     |
|---|------------------------------|
|  Refurbishing and Interior fit out of a 3 BHK residential apartment at Thirumangalam   | Anna Nagar, Chennai.         |
|  Interior fit out of 5 Nos of 3 BHK residential apartments at Sait Colony  | Egmore, Chennai.             |
|  Interior fit out of 3 BHK residential apartments at Jeyachandran Nagar  | Pallikaranai, Chennai        |
|  Interior fit out of an office at Aravamudan Garden  | Egmore, Chennai              |
|  Interior fit out of 3 BHK residential apartments  | KK Nagar, Chennai            |
|  Design and complete turnkey interior fit out including loose furniture, air conditioners, MEP services, exterior enhancement and landscaping of a nourishment centre at Harrington Road                                 | Chetpet Chennai.             |
|  Design and complete turnkey interior fit out including custom made loose furniture, air conditioners, firefighting, plumbing, electrical, low current of a posh 3 BHK apartment at Lillac Heights - <b>2500 Sq. Ft.</b> | Raja Annamalaipuram, Chennai |
|  Complete Turnkey Interior fit out including custom made loose furniture, air conditioners, MEP services of an office - <b>4500 Sq. Ft.</b>  | Alangulam, Tenkasi District  |
|  Turnkey Interior Fit out of 5 Nos, of 2 BHK, 2 Nos of 1 BHK residential apartment   | Perumbakkam, Chennai         |
|  Exterior of an office building complete Interiors of an office at Jambulingam Street  | Nungambakkam, Chennai        |
|  Exterior works of a residential building including installation of the automated motorised sliding gate and eurocon paver blocks flooring and the complete maintenance works at Nowroji Road                          | Chetpet, Chennai             |
|  Turnkey Interior fit out of 4 Nos of 2 BHK residential apartments at Jeyachandran Nagar   | Pallikaranai, Chennai        |
|  Partial Interior fit out of 3 Nos of 2 BHK residential apartments at Jeyachandran Nagar   | Pallikaranai, Chennai        |
|  Partial Interior fit out of 3 Nos of 2 BHK residential apartments at Jeyachandran Nagar   | Pallikaranai, Chennai        |
| Remodelling of the swimming pool, kids pool at Hotel Ambassador Pallava and the complete exterior flooring with Jodhpur stones and Jallies around the pool.   | Hotel Ambassador Pallava     |

## Ongoing Projects

|  |                       |
|--|-----------------------|
|  Design and interior of a 3 BHK residential apartment   | Perumbakkam, Chennai  |
|  Renovation, refurbishment and interior of an auditorium for MEASI Institute of Information Technology at The New College | Royapettah, Chennai   |
|  Design coordination of the interiors of 2 Nos of 3 BHK and 2 Nos of Duplex residential apartments at Seetha Nagar        | Nungambakkam, Chennai |





# CONTACT

## SAFAA Constructions and Interiors Pvt. Ltd.,

Address:

26, First Floor, Jambulingam Street,  
Nungambakkam, Chennai - 600 034

Phone:

044 - 4767 3917

Email:

[enquiry@safaaconstructions.com](mailto:enquiry@safaaconstructions.com)



Scan for  
Website



Scan for  
Location